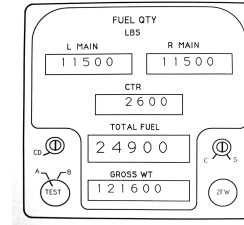




Fuel Quantity Panel



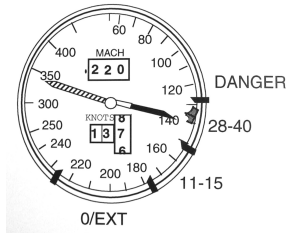
Speed Card

MANEUVERING	
FLAPS/SLATS	SPEED
0/RET	- 227
0/EXT	- 177
11	- 155
15	- 152
28	- 142
40	- 137
VREF	
28/EXT	- 132
40/EXT	- 128
122,000 LBS	

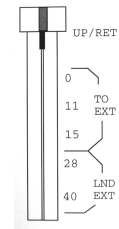


Imagined Labels on the Airspeed Indicator

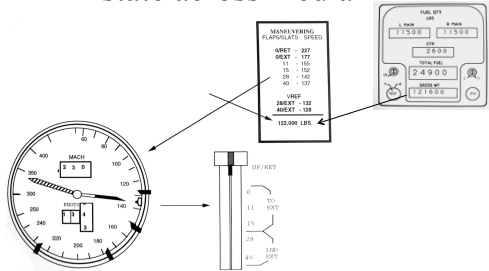
MANEUVERING	
FLAPS/SLATS	SPEED
0/RET	- 227
0/EXT	- 177
11	- 155
15	- 152
28	- 142
40	- 137
VREF	
28/EXT	- 132
40/EXT	- 128
122,000 LBS	



Flap Control Handle



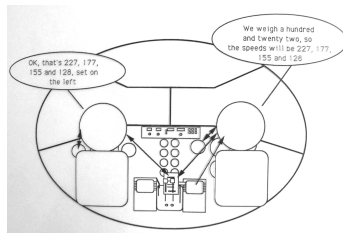
Propagation of representational state across media



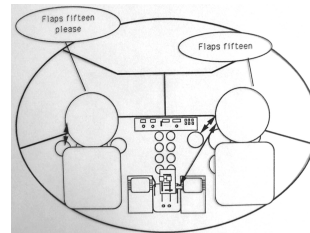
Embodied Cockpit?

- Fuel panel = somatosensory system
- Speed card book = long term memory
- ASI = sensory system
- Bugs on ASI = short term memory
- Flap handle = motor system

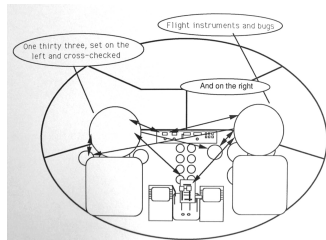
Setting the Bugs



"Flaps 15"



Instrument Cross-check



Where is the runway?



500 Feet Above the Field

